

Submission Requirements

If requirements are not met, you will be notified and given 48 hours to resubmit.

If your project is not resubmitted, it will be excluded from the judging and awards.

To submit your entry, visit www.agcace.com. You will also submit your high resolution photos and PDF narrative to WeTransfer.com

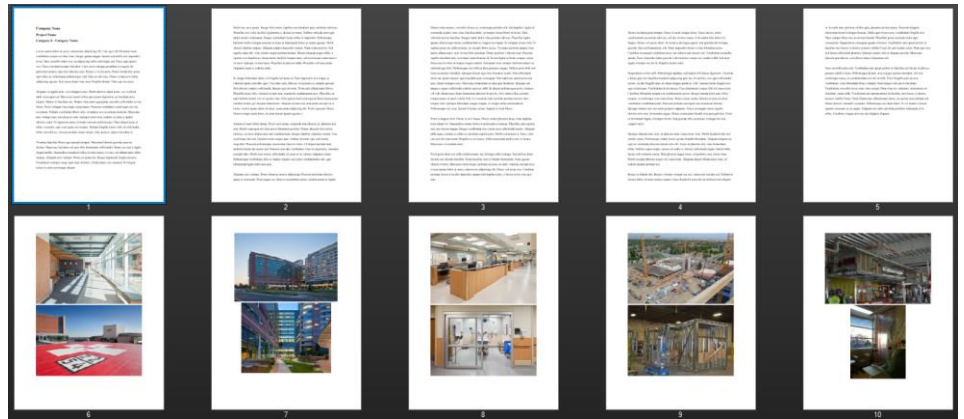


1) NARRATIVE

- File Type:** PDF Maximum File Size 10MB
- Word Limit:** 1,500 words
- Pages:** 10 pages maximum and pages must be numbered
- Font:** 12 point, Times New Roman
- Line Spacing:** 1.5 Line Spacing
- Margins:** 1" Top, Bottom and Sides
- No shading or color (including font)
- No company logos, hyperlinks, photo collages, charts or text boxes (no visuals, only text)

2) PHOTOS

- Include up to 10 maximum photos **at the end of the narrative within the PDF document**. These photos are used to tell the story of the project and are not scored by the judges.



- ALSO, download up to 10 maximum photos as a separate .JPG file to WETransfer.** These photos should be magazine quality/high resolution. These photos are used for the ACE banquet, the ACE website, and in the AGC annual magazine.
- Photo Release: Your submission of photos, rendering, or 3D model images indicates that your company owns the rights to allow AGC to use any submitted image on the ACE Awards video, the ACE website, and in the AGC annual magazine.

3) FILE TRANSFER

- Go to www.WeTransfer.com
- Follow the instructions illustrated below.
- "Add" the PDF document and up to 10 correctly named photos. **Photos must be named correctly to be accepted. (See below)**

A screenshot of the WeTransfer.com website interface. The top left shows the WeTransfer logo and the URL <http://www.WeTransfer.com>. The main content area shows a form for sending files, with fields for 'Send up to 2GB', '+ Add files', 'Friend's email', 'Your email', and 'Message'. A 'Transfer' button is at the bottom. To the left, a list of 11 files is shown, including 10 .jpg files and 1 .doc file, all named with a company name, project name, and category number. Red arrows point from text boxes to specific parts of the interface: 'andrea@agccolorado.org' points to the 'Your email' field; 'Your Email Address' points to the 'Friend's email' field; a box containing '- Company Name', '- Category #, Category Name', '- Project Name', and '- Contact Name & Phone Number' points to the 'Message' field; and 'Click Transfer' points to the 'Transfer' button.